



NEW-MED s.r.l.

Piazza Santa Maria, 18 26855 Lodi Vecchio (LO) - Italy
+39 0371752374

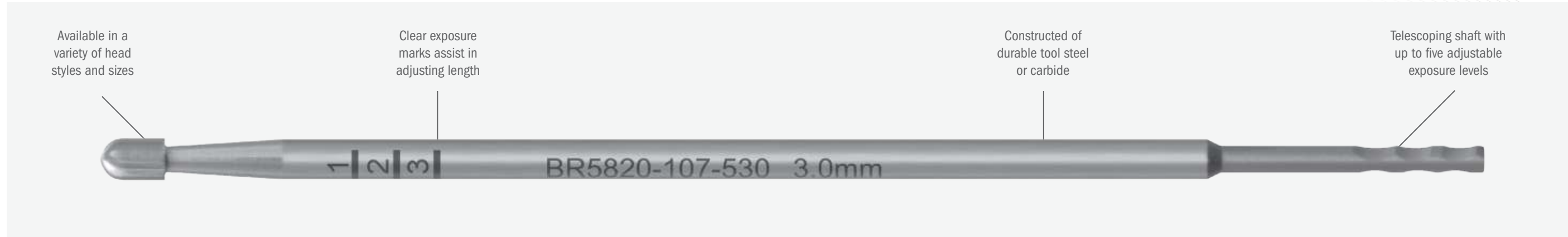
info@new-med.eu

<https://www.new-med.eu/>

P.iva/C.F: IT-12502690964 - Rea: LO-2666383

BUSA® Telescoping Burs

Compatible with Stryker® Signature Portfolio Elite Attachments



Compare to Stryker® Part No.	BUSA® Part No.	Description	Head Diameter (mm)	Head Length (mm)
5820-010-120	BR5820-010-120	Round Fluted Bur - Less Aggressive	2.0	2.0
5820-010-130	BR5820-010-130	Round Fluted Bur - Less Aggressive	3.0	3.0
5820-010-140	BR5820-010-140	Round Fluted Bur - Less Aggressive	4.0	4.0
5820-010-150	BR5820-010-150	Round Fluted Bur - Less Aggressive	5.0	5.0
5820-010-160	BR5820-010-160	Round Fluted Bur - Less Aggressive	6.0	6.0
5820-010-170	BR5820-010-170	Round Fluted Bur - Less Aggressive	7.0	7.0
5820-010-230	BR5820-010-230	Round Fluted Bur - Aggressive	3.0	3.0
5820-010-240	BR5820-010-240	Round Fluted Bur - Aggressive	4.0	4.0
5820-010-250	BR5820-010-250	Round Fluted Bur - Aggressive	5.0	5.0
5820-107-020	BR5820-107-020	Neuro Match Head Drill	2.0	3.3
5820-107-025	BR5820-107-025	Neuro Match Head Drill	2.5	3.7
5820-107-030	BR5820-107-030	Neuro Match Head Drill	3.0	3.8
5820-107-040	BR5820-107-040	Neuro Match Head Drill	4.0	5.1
5820-107-430	BR5820-107-430	Neuro Match Head Drill - Less Aggressive	3.0	3.8
5820-107-430S1	BR5820-107-430S1	Neuro Match Head Drill - Specialty	3.0	3.8
5820-107-530	BR5820-107-530	Neuro Match Head Drill - Exact	3.0	3.8
5820-107-530C	BR5820-107-530C	Neuro Match Head Drill - Carbide	3.0	3.8
5820-010-640	BR5820-010-640	Cross Cut Round Bur	4.0	4.0
5820-010-650	BR5820-010-650	Cross Cut Round Bur	5.0	5.0
5820-010-660	BR5820-010-660	Cross Cut Round Bur	6.0	6.0
5820-012-020	BR5820-012-020	Round Diamond Bur	2.0	2.0
5820-012-030	BR5820-012-030	Round Diamond Bur	3.0	3.0
5820-012-040	BR5820-012-040	Round Diamond Bur	4.0	4.0

Compare to Stryker® Part No.	BUSA® Part No.	Description	Head Diameter (mm)	Head Length (mm)
5820-012-050	BR5820-012-050	Round Diamond Bur	5.0	5.0
5820-012-060	BR5820-012-060	Round Diamond Bur	6.0	6.0
5820-013-020	BR5820-013-020	Round Diamond Bur - Coarse	2.0	2.0
5820-013-030	BR5820-013-030	Round Diamond Bur - Coarse	3.0	3.0
5820-013-040	BR5820-013-040	Round Diamond Bur - Coarse	4.0	4.0
5820-013-050	BR5820-013-050	Round Diamond Bur - Coarse	5.0	5.0
5820-013-140	BR5820-013-140	Round Diamond Bur - X-Coarse	4.0	4.0
5820-013-150	BR5820-013-150	Round Diamond Bur - X-Coarse	5.0	5.0
5820-012-310	BR5820-012-310	Tapered Round Diamond Bur	1.0	1.0
5820-012-315	BR5820-012-315	Tapered Round Diamond Bur	1.5	1.5
5820-012-320	BR5820-012-320	Tapered Round Diamond Bur	2.0	2.0
5820-107-130	BR5820-107-130	Neuro Diamond Drill	3.0	3.8
5820-066-216	BR5820-066-216	Cross Cut Fissure Bur - Tungsten Carbide	1.6	6.2
5820-080-021	BR5820-080-021	Helicoidal Rasp	2.1	19.6
5820-066-012	BR5820-066-012	Cross Cut Fissure Bur	1.2	4.4
5820-066-016	BR5820-066-016	Cross Cut Fissure Bur	1.6	4.7
5820-066-021	BR5820-066-021	Cross Cut Fissure Bur	2.1	2.1
5820-015-040	BR5820-015-040	Egg Bur	4.0	9.9
5820-015-050	BR5820-015-050	Egg Bur	5.0	9.9
5820-070-011	BR5820-070-011	Straight Router	1.1	6.0
5820-103-010	BR5820-103-010	Wire Pass Drill	1.0	6.7
5820-103-015	BR5820-103-015	Wire Pass Drill	1.5	6.7
5820-103-020	BR5820-103-020	Wire Pass Drill	2.0	6.7

Stryker® is a registered trademark of Stryker Corporation or its affiliates.